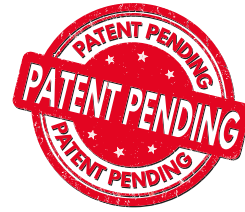


oerlikon
hrsflow

GLOW HRS

No halos. Even with direct injection.



COMPACT TECHNOLOGY. FLAWLESS SURFACES.

The GLOW HRS solution enables the direct injection of aesthetic parts in amorphous materials, preventing halos. With precise surface temperature control, this cutting-edge technology streamlines post-molding decoration, contributing to a more sustainable process.

Main Benefits

- High-quality parts through direct injection, avoiding halos
- Simplified post-molding decoration operations
- Compact solution
- Easy to install
- Low energy consumption
- No impact on cycle time

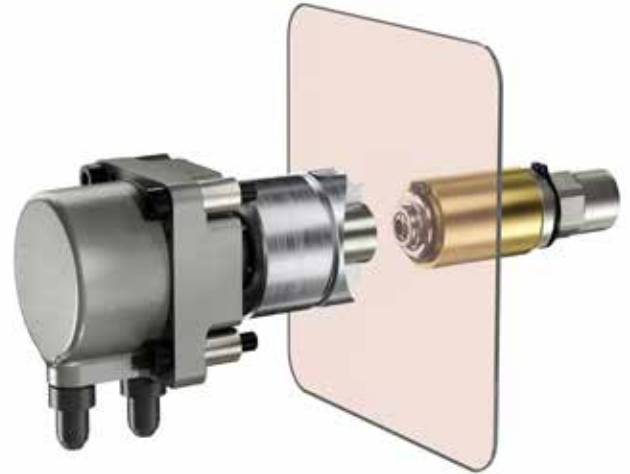


Fig.1 GLOW HRS solution

DELIVERING SUPERIOR AUTOMOTIVE PARTS QUALITY

Standard technology



GLOW HRS solution



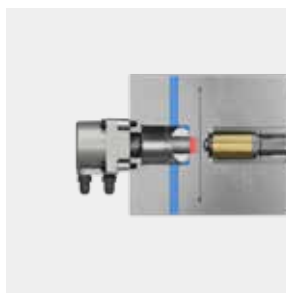
APPLICATIONS

Perfect for large automotive Class "A" surfaces: from hoods and tailgates to roofs and smart panels.



HOW GLOW HRS WORKS

1. HEATING



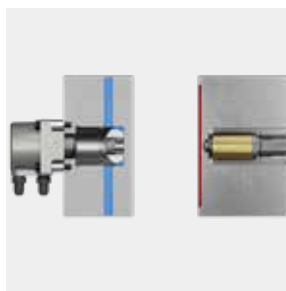
2. FILLING



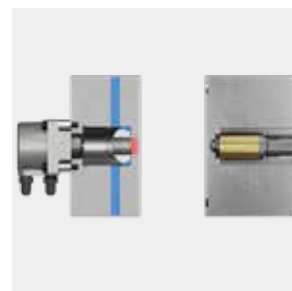
3. HOLDING & COOLING



4. EJECTION



5. INJECTION MOLDING MACHINE CLOSING



>> CUSTOMER SUPPORT

Try your most challenging polymers in **our Test Lab** and experience GLOW HRS technology!



Our team provides you with complete support, from the rheological analysis and design phase to try-out and maintenance.

For special applications, we can define the optimal system configuration and predict part quality through advanced hot runner systems available in our Test Lab.

Plastic samples entailing weight, thickness, geometry and exact material grade can be produced to carry out preliminary verifications.

TEST – LAB EQUIPMENT AT YOUR DISPOSAL

- **Prototype tools** available to try your target polymers
- **Full range of nozzles** and flow types based on your specific application
- **Injection Molding Machines** from 170 to 1100 tons

Oerlikon HRSflow Italy

Production Plant
Headquarter
Via Piave, 4 - San Polo di Piave
31020 Treviso
Phone +39 0422 750 111
info.hrsflow@oerlikon.com - www.hrsflow.com

24/7 Service Hotline

Phone +39 0422 750 555
service.hrsflow@oerlikon.com

Oerlikon HRSflow China

Production Plant
Inglass Tooling & Hot Runner Manufacturing
(China) Co. Ltd
No. 385, Road No. 18, Xiasha, Hangzhou Econ. &
Tech. Devel. Area Zhejiang 310018
Phone +86 571 86686900
china.hrsflow@oerlikon.com

24/7 customer service for Asian countries

Phone +86 18858181211
service.china.hrsflow@oerlikon.com

Oerlikon HRSflow USA

Production Plant
Oerlikon HRSflow USA, LLC
920 74th Street - 49315 Byron Center, MI
Phone +1 616 228 6900
usa.hrsflow@oerlikon.com

24/7 Service Hotline

Phone +1-855-HRS-FLOW
(1-855-477-3569)
service.usa.hrsflow@oerlikon.com