

# NEW



# VTC

## Sequential Valve Gate Controller



Sequential valve gate controller by time, position or volume.

VTC Sequential Valve Gate Controller is a compact and user friendly solution for accurate fill control of injection molded parts. It is ideal both for automotive (bumpers, instrument panels, etc) and electronic (TV frame, etc) applications.

The VTC provides time, position or volume based control of up to 18 pneumatic or hydraulic valve gates. The 5,7" colour touch screen interface permits easy operation. LEDs on the front side provide real-time visualization of the valve gate open or close position, the injection signal and alarm status.

The VTC is ideal for injection molding machines without sequential fill capability. It does not require special options from the molding machine other than a start signal for the injection cycle. The controller has an internal memory which stores numerous process program setups for easy recall or printing.

### FUNCTIONALITIES

- Sequential control by time, volume, mm (according to screw position)
- Control up to 3 open/close valve gate sequences for each cycle
- Limit switch verify (optional)
- Single Valve gate association with up to 3 injection barrel
- Working parameters for print function

## AVAILABLE VERSIONS

- 6, 12 and 18 valve gates

## MAIN FEATURES

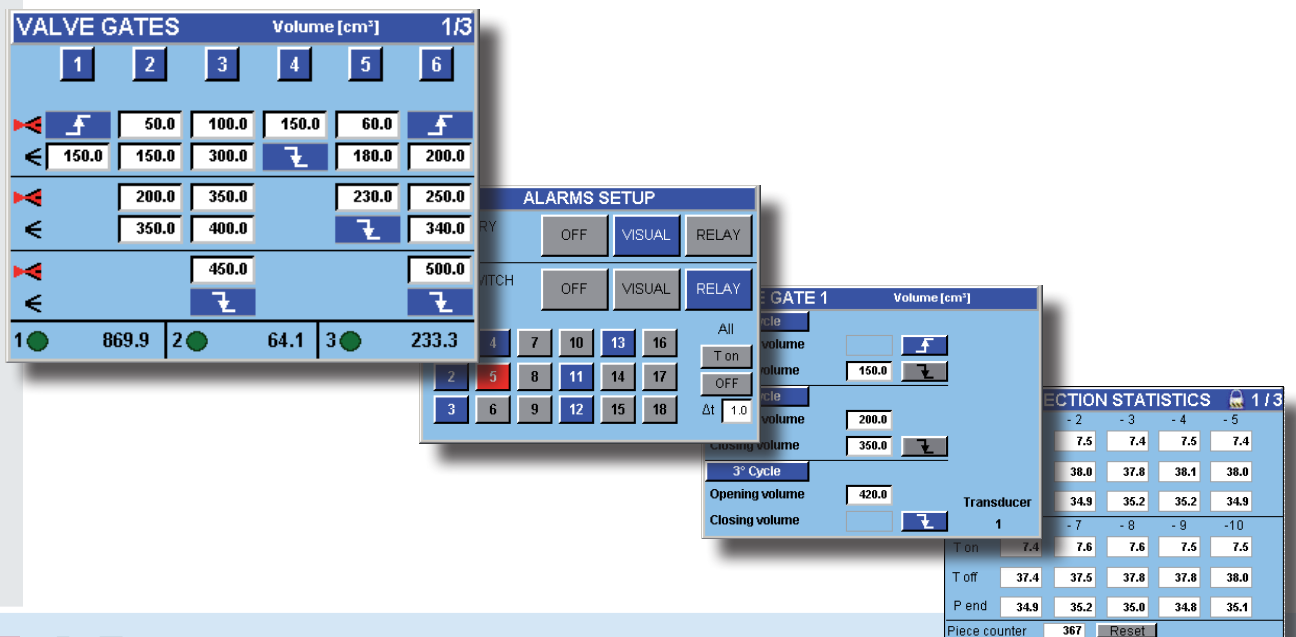
- Multilingual interface on colour touch screen display
- Cycle time and part counter visualization
- Possibility to store more than 100 mold setup
- Advanced diagnostic functions for easy troubleshooting
- Alarm output with relay (limit switch alarm, pressure switch alarm)
- Direct interface to injection molding machine

## TECHNICAL SPECIFICATIONS

- Dimensions (WxLxH): 470x310x210 mm
- Power Supply: 230 Vac 50/60Hz 6A
- Ambient Temperature Range: 0°C ÷ 55°C
- Command to solenoid valves: 24Vdc 30W Max
- Digital Input: 3 x Injection Input, Pressure and Limit Switches
- Analog Input: 3 x Injection screw position 0 ÷ 10 Vdc
- Auxiliary Output: Alarm relay, main line pressure supply
- Communication Port: 1 x USB

## ACCESSORIES

- Std connection cables 4, 6, 10 meters
- Custom cables by customer specification
- Trolley
- Pneumatic or hydraulic electrovalves pack
- Linear position transducer



**INGlass**

**FLOW HRS**

A transparent vision

Via Piave, 4 - 31020 - S.Polo di Piave (TV) - I  
Tel. +39 0422-750111 Fax. +39 0422-750301  
info@inglass.it www.inglass.it  
info@hrsflow.com www.hrsflow.com