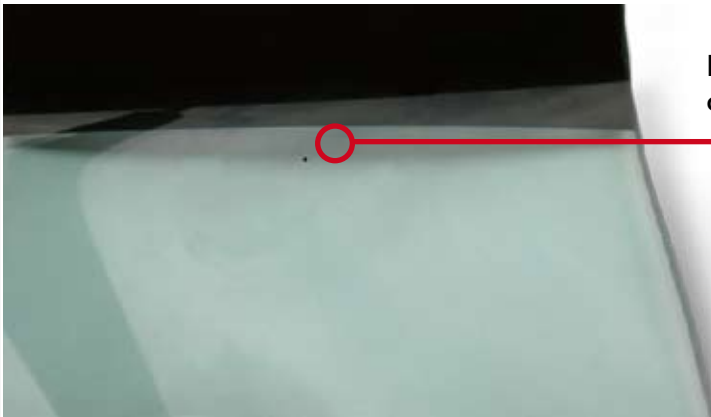




The new INglass-HRSFlow Diamond line

One of the main problems involving the use of polycarbonate are blackpoints.



Even Just one black point can jeopardise the final result

What causes this?

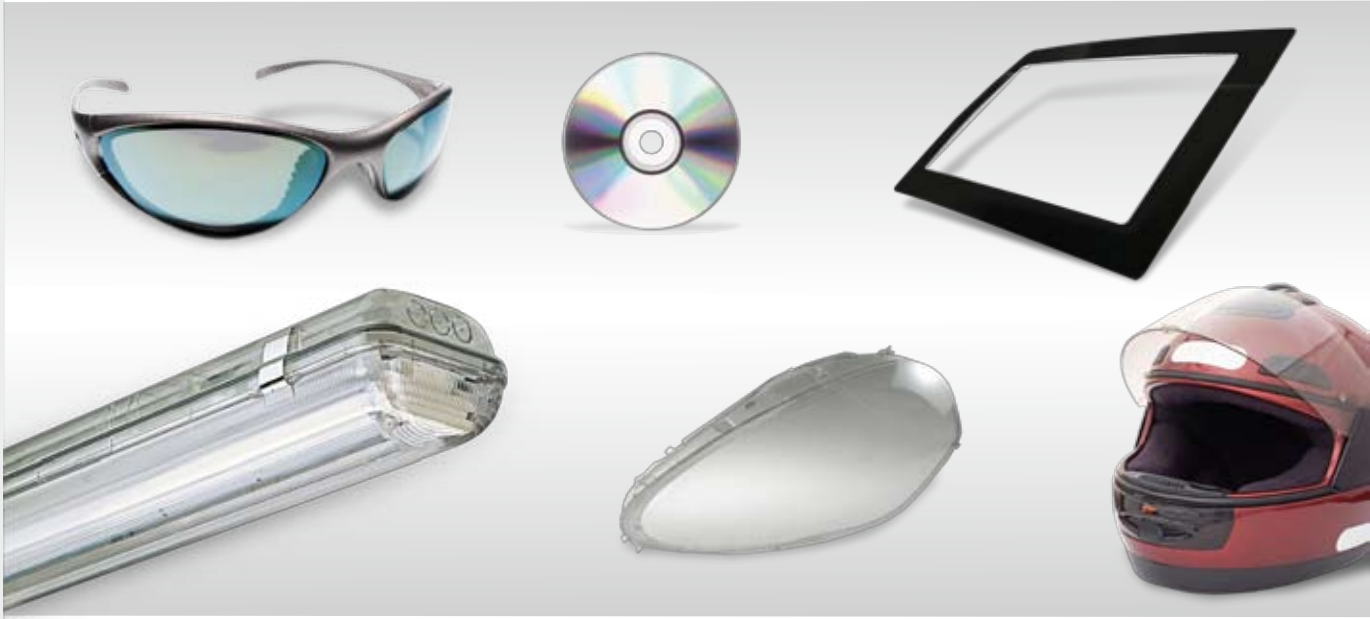
Polycarbonate reacts with the steel in the hot runner system creating a black film. Particles detach from the surface and create blackpoints on the molded item.



INglass-HRSFlow solution

How can the problem be solved?

INglass-HRSFlow has carried out in-depth research in order to develop a specific material and coating capable of eliminating this problem. The new hot runner system is especially recommended for all components requiring aesthetic quality and a top class finish.



Test's result:

Test carried out using ducts with special INglass-HRSFlow steel.

Total absence of the film created by the corrosion of the PC on the steel



Test carried out using ducts with standard steel

Presence of the Film created by the corrosion of the PC on the steel



INglass[™]

FLOW
HRS[™]

A transparent vision

Via Piave, 4 - 31020 - S.Polo di Piave (TV) - I
Tel. +39 0422-750111 Fax. +39 0422-750301
info@inglass.it www.inglass.it
info@hrsflow.com www.hrsflow.com